



MILLAMIA

SWEDEN

CHRISTMAS STOCKINGS

www.millamia.com

CANDY CANE

SKILL LEVEL **Beginner / Improving**

FLAT MEASUREMENTS

Approx 31cm/12 ¼ in to heel by 16.5cm/6 ½ in wide at the top.

MATERIALS *as pictured*

- Two balls of MillaMia Naturally Soft Merino in Snow (124) (M).
 - One ball of Scarlet (140) (C).
 - Pair each of 3mm (US 2) and 3.25mm (US 3) needles.
- Log on to www.millamia.com to find yarn stockists near you or to buy Naturally Soft Merino yarn on-line.

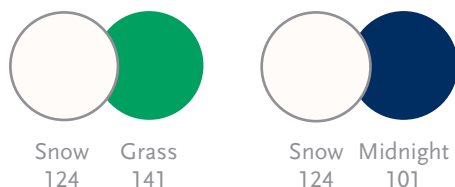
TENSION / GAUGE

25 sts and 34 rows to 10cm/4in over st st using 3.25mm (US 3) needles.

ABBREVIATIONS

alt - alternate; beg - beginning; cont - continue; dec - decrease;
foll - following; g-st - garter stitch; k or K - knit; k2 tog - knit two stitches together; patt - pattern; p or P - purl; p2 tog - purl two stitches together;
rem - remaining; sl - slip stitch; skpo - slip one, knit one, pass slipped stitch over - one stitch decreased; st(s) - stitch(es); st st - stocking stitch.

SUGGESTED ALTERNATIVE COLOURWAYS



TO MAKE

With 3mm (US 2) needles and M, cast on 82 sts.

Cont in g-st until cuff measures 7cm/2 ¾ in from cast on edge.
Mark each end of last row with a coloured thread.

Beg with a k row cont in st st and stripes of 2 rows C and 4 rows M until work measures 7cm/2 ¾ in from coloured threads, ending with a p row.

Change to 3.25mm (US 3) needles.

Cont in stripes until work measures 24cm/9 ½ in from coloured threads, ending with 1 row M.

Cont in M only.



Shape heel

Next row P21 sts only, turn.

Work 21 rows in st st on these 21 sts only.

Dec row P4, p2 tog, p1, turn.

Next row Sl 1, k5.

Dec row P6, p2 tog, p1, turn.

Next row Sl 1, k7.

Dec row P8, p2 tog, p1, turn.

Next row Sl 1, k9.

Dec row P10, p2 tog, p1, turn.

Next row Sl 1, k11.

Dec row P12, p2 tog, p1, turn.

Next row Sl 1, k13.

Dec row P14, p2 tog, break yarn.

Leave rem 15 sts on a holder.

With wrong side facing, rejoin M to rem sts, p next 40 sts, slip these sts onto a holder, p to end.

Work 20 rows in st st on these 21 sts.

Cont in M only.

Dec row K4, skpo, k1, turn.

Next row Sl 1, p5.

Dec row K6, skpo, k1, turn.

Next row Sl 1, p7.

Dec row K8, skpo, k1, turn.

Next row Sl 1, p9.

Dec row K10, skpo, k1, turn.

Next row Sl 1, p11.

Dec row K12, skpo, k1, turn.

Next row Sl 1, p13.

Dec row K14, skpo, turn.

Next row Sl 1, p14.

Shape instep

Next row Using M, k15, pick up and k15 sts evenly along inside edge of heel, k40 sts from holder, pick up and k15 sts along inside edge of heel and k15 sts from holder. 100 sts.

P 1 row.

Cont in stripes of 2 rows C and 4 rows M.

Dec row K28, k2 tog, k40, skpo, k28.

P 1 row.

Dec row K27, k2 tog, k40, skpo, k27.

P 1 row.

Dec row K26, k2 tog, k40, skpo, k26.

P 1 row.

Cont to dec 1 st either side of the centre 40 sts on next and 5 foll alt rows. 82 sts.

Work 31 rows st st.

Shape toe

Dec row K5, skpo, k28, k2 tog, k8, skpo, k28, k2 tog, k5.

P 1 row.

Dec row K5, skpo, k26, k2 tog, k8, skpo, k26, k2 tog, k5.

P 1 row.

Dec row K5, skpo, k24, k2 tog, k8, skpo, k24, k2 tog, k5.

P 1 row.

Dec row K5, skpo, k22, k2 tog, k8, skpo, k22, k2 tog, k5.

P 1 row.

Cont in M only.

Dec row K5, skpo, k20, k2 tog, k8, skpo, k20, k2 tog, k5.

P 1 row.

Dec row K5, skpo, k18, k2 tog, k8, skpo, k18, k2 tog, k5. 58 sts.

P 1 row.

Next row Cast off 2 sts, k next 26 sts, turn.

Cast off 2 sts at beg of next 7 rows. 13 sts.

Cast off.

With right side facing, rejoin M to rem sts, cast off 2 sts, k to end.

Cast off 2 sts at beg of next 7 rows. 13 sts.

Cast off.

LOOP

With 3mm (US 2) needles and M cast on 40 sts. K 1 row. Cast off.

MAKE UP

Join seam (remembering to join on reverse side for cuff as it will be folded to the right side). Fold cuff to right side. Fold loop in half and attach to back of stocking.

CABLE STOCKING

SKILL LEVEL Improving

FLAT MEASUREMENTS

Approx 31cm/12 ¼ in to heel by 13.5cm/5 ½ in wide at the top.

MATERIALS *as pictured*

- Three balls of MillaMia Naturally Soft Merino in Scarlet (140).
- Pair each of 3mm (US 2) and 3.25mm (US 3) needles.
- Cable needle.

Log on to www.millamia.com to find yarn stockists near you or to buy Naturally Soft Merino yarn on-line.

TENSION / GAUGE

25 sts and 34 rows to 10cm/4in over st st using 3.25mm (US 3) needles.

ABBREVIATIONS

alt - alternate; beg - beginning; cont - continue; dec - decrease; foll - following; k or K - knit; k2 tog - knit two stitches together; m1 - make one stitch by picking up the loop lying before the next stitch and knitting into back of it; patt - pattern; p or P - purl; p2 tog - purl two stitches together; rem - remaining; rep - repeat; sl - slip stitch; skpo - slip one, knit one, pass slipped stitch over - one stitch decreased; st(s) - stitch(es); st st - stocking stitch.

SPECIAL ABBREVIATIONS

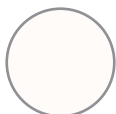
C10F cable 10 forward - slip next 5 sts on a cable needle and hold at front of work, k5, then k5 from cable needle.

C10B cable 10 back - slip next 5 sts on a cable needle and hold at back of work, k5, then k5 from cable needle.

SUGGESTED ALTERNATIVE COLOURWAYS



Moss
103



Snow
124



Claret
104



TO MAKE

With 3.25mm (US 3) needles cast on 80 sts.

1st row K21, p2, [k7, p2] 4 times, k21.

2nd row P to end.

3rd and 4th rows As 1st and 2nd rows.

5th row K21, p2, [k3, m1, k1, m1, k1, m1, k2, p2] 4 times, k21. 92 sts.

6th row P to end.

7th row K21, p2, [C10F, p2, C10B, p2] twice, k21.

8th row P to end.

9th row K21, p2, [k10, p2] 4 times, k21.

10th row P to end.

11th to 18th rows Rep the 9th and 10th rows four times more.

7th to 18th rows form the patt.

Cont in patt until work measures 24cm/9 ½ in from cast on edge, ending with a right side row

Shape heel

Next row P21 sts only, turn.

Work 21 rows in st st on these 21 sts only.

Dec row P4, p2 tog, p1, turn.

Next row Sl 1, k5.

Dec row P6, p2 tog, p1, turn.

Next row Sl 1, k7.

Dec row P8, p2 tog, p1, turn.

Next row Sl 1, k9.

Dec row P10, p2 tog, p1, turn.

Next row Sl 1, k11.

Dec row P12, p2 tog, p1, turn.

Next row Sl 1, k13.

Dec row P14, p2 tog, break yarn.

Leave rem 15 sts on a holder.

With wrong side facing, rejoin yarn to rem sts, p next 50 sts, slip these sts onto a holder, p to end.

Work 20 rows in st st on these 21 sts.

Dec row K4, skpo, k1, turn.

Next row Sl 1, p5.

Dec row K6, skpo, k1, turn.

Next row Sl 1, p7.

Dec row K8, skpo, k1, turn.

Next row Sl 1, p9.

Dec row K10, skpo, k1, turn.

Next row Sl 1, p11.

Dec row K12, skpo, k1, turn.

Next row Sl 1, p13.

Dec row K14, skpo, turn.

Next row Sl 1, p14.

Shape instep

Next row K15, pick up and k15 sts evenly along inside edge of heel, patt 50 sts from holder, pick up and k15 sts along inside edge of heel and k15 sts from holder. 110 sts.

Patt 1 row.

Dec row K28, k2 tog, patt 50, skpo, k28.

P 1 row.

Dec row K27, k2 tog, patt 50, skpo, k27.

P 1 row.

Dec row K26, k2 tog, patt 50, skpo, k26.

P 1 row.

Cont to dec 1 st either side of the centre 50 sts on next and 5 foll alt rows. 92 sts.

Work a further 31 rows.

Dec row K21, p2, * k1, [k2 tog, k1] 3 times, p2; rep from * 3 times more, k21. 80 sts.

Next row P to end, dec 2 sts evenly across row. 78 sts.

Shape toe

Dec row K5, skpo, k26, k2 tog, k8, skpo, k26, k2 tog, k5.

P 1 row.

Dec row K5, skpo, k24, k2 tog, k8, skpo, k24, k2 tog, k5.

P 1 row.

Dec row K5, skpo, k22, k2 tog, k8, skpo, k22, k2 tog, k5.

P 1 row.

Dec row K5, skpo, k20, k2 tog, k8, skpo, k20, k2 tog, k5.

P 1 row.

Dec row K5, skpo, k18, k2 tog, k8, skpo, k18, k2 tog, k5. 58 sts.

P 1 row.

Next row Cast off 2 sts, k next 26 sts, turn.

Cast off 2 sts at beg of next 7 rows. 13 sts.

Cast off.

With right side facing, rejoin yarn to rem sts, cast off 2 sts, k to end.

Cast off 2 sts at beg of next 7 rows. 13 sts.

Cast off.

CUFF

With 3.25mm (US 3) needles cast on 22 sts.

1st row P3, k7, p2, k7, p3.

2nd row P to end.

3rd and 4th rows As 1st and 2nd rows.

5th row P3, k3, m1, k1, m1, k1, m1, k2, p2, k3, m1, k1, m1, k1, m1, k2, p3. 28 sts.

6th row P to end.

7th row P3, C10F, p2, C10B, p3.

8th row P to end.

9th row P3, k10, p2, k10, p3.

10th row P to end.

11th to 18th rows Rep the 9th and 10th rows four times more.

7th to 18th rows form the patt.

Cont in patt until side edge fits along cast on edge of stocking, ending with a wrong side row.

Dec row P3, k1, [k2 tog, k1] 3 times, p2, k1, [k2 tog, k1] 3 times, p3. 22 sts.

Work 1 row. Cast off.

LOOP

With 3mm (US 2) needles cast on 40 sts.

K 1 row. Cast off.

MAKE UP

With wrong side of cuff to right side of stocking and 3mm (US 2) needles, pick up and k 80 sts, working through both thicknesses.

Next row K to end.

Cast off. Join back and cuff seams.

Fold loop in half and sew end to back of stocking.

NORDIC STAR STOCKING

SKILL LEVEL **Beginner / Improving**

FLAT MEASUREMENTS

Approx 31cm/12 ¼ in to heel by 16.5cm/6 ½ in wide at the top.

MATERIALS *as pictured*

- Two balls of MillaMia Naturally Soft Merino in Scarlet (140) (M).
- One ball in Snow (124) (C).
- Pair each of 3mm (US 2) and 3.25mm (US 3) needles.

Log on to www.millamia.com to find yarn stockists near you or to buy Naturally Soft Merino yarn on-line.

TENSION / GAUGE

25 sts and 34 rows to 10cm/4in over st st using 3.25mm (US 3) needles.

ABBREVIATIONS

alt - alternate; beg - begin(ning); cont - continue; dec - decrease; foll - following; g-st - garter stitch; k or K - knit; k2 tog - knit two stitches together; patt - pattern; p or P - purl; p2 tog - purl two stitches together; rem - remaining; sl - slip stitch; skpo - slip one, knit one, pass slipped stitch over - one stitch decreased; st(s) - stitch(es); st st - stocking stitch.

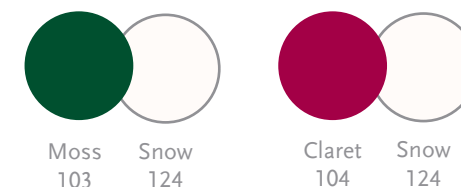
HINTS AND TIPS

Festive and fun with the Nordic Star motif on the front and back. If you do not want to use the Fair Isle technique to add the motif you can always use Swiss Darning instead.

As you will be working with 2 separate balls of C at once in this pattern, wind off approximately half of C before you start.



SUGGESTED ALTERNATIVE COLOURWAYS



TO MAKE

With 3mm (US 2) needles and C, cast on 82 sts.

Cont in g-st until cuff measures 7cm/2 ¾in from cast on edge.

Mark each end of last row with a coloured thread.

Cut off C.

Join on M.

Beg with a k row cont in st st until work measures 7cm/2 ¾in from coloured threads, ending with a p row.

Change to 3.25mm (US 3) needles.

Work 6 rows st st.

Now work from Chart, using 2 separate balls of C.

1st row K5M, work across 1st row of Chart, k10M, work across 1st row of Chart, k5M.

2nd row P5M, work across 2nd row of Chart, p10M, work across 2nd row of Chart, p5M.

These 2 rows set the position of the Charts.

Cont in patt to end of Chart.

Cont in M only until work measures 24cm/9 ½in from coloured threads, ending with a k row.

Shape heel

Next row P21 sts only, turn.

Work 21 rows in st st on these 21 sts only.

Dec row P4, p2 tog, p1, turn.

Next row Sl 1, k5.

Dec row P6, p2 tog, p1, turn.

Next row Sl 1, k7.

Dec row P8, p2 tog, p1, turn.

Next row Sl 1, k9.

Dec row P10, p2 tog, p1, turn.

Next row Sl 1, k11.

Dec row P12, p2 tog, p1, turn.

Next row Sl 1, k13.

Dec row P14, p2 tog, break yarn.

Leave rem 15 sts on a holder.

With wrong side facing, rejoin M to rem sts, p next 40 sts, slip these sts onto a holder, p to end.

Work 20 rows in st st on these 21 sts.

Dec row K4, skpo, k1, turn.

Next row Sl 1, p5.

Dec row K6, skpo, k1, turn.

Next row Sl 1, p7.

Dec row K8, skpo, k1, turn.

Next row Sl 1, p9.

Dec row K10, skpo, k1, turn.

Next row Sl 1, p11.

Dec row K12, skpo, k1, turn.

Next row Sl 1, p13.

Dec row K14, skpo, turn.

Next row Sl 1, p14.

Shape instep

Next row Using M, k15, pick up and k15 sts evenly along inside edge of heel, k40 sts from holder, pick up and k15 sts along inside edge of heel and k15 sts from holder. 100 sts.

P 1 row.

Dec row K28, k2 tog, k40, skpo, k28.

P 1 row.

Dec row K27, k2 tog, k40, skpo, k27.

P 1 row.

Dec row K26, k2 tog, k40, skpo, k26.

P 1 row.

Cont to dec 1 st either side of the centre 40 sts on next and 5 foll alt rows. 82 sts.

Work 31 rows st st.

Shape toe

Dec row K5, skpo, k28, k2 tog, k8, skpo, k28, k2 tog, k5.

P 1 row.

Dec row K5, skpo, k26, k2 tog, k8, skpo, k26, k2 tog, k5.

P 1 row.

Dec row K5, skpo, k24, k2 tog, k8, skpo, k24, k2 tog, k5.

P 1 row.

Dec row K5, skpo, k22, k2 tog, k8, skpo, k22, k2 tog, k5.

P 1 row.

Dec row K5, skpo, k20, k2 tog, k8, skpo, k20, k2 tog, k5.

P 1 row.

Dec row K5, skpo, k18, k2 tog, k8, skpo, k18, k2 tog, k5. 58 sts.

P 1 row.

Next row Cast off 2 sts, k next 26 sts, turn.

Cast off 2 sts at beg of next 7 rows. 13 sts.

Cast off.

With right side facing, rejoin M to rem sts, cast off 2 sts, k to end.

Cast off 2 sts at beg of next 7 rows. 13 sts.

Cast off.

LOOP

With 3mm (US 2) needles and M cast on 40 sts.

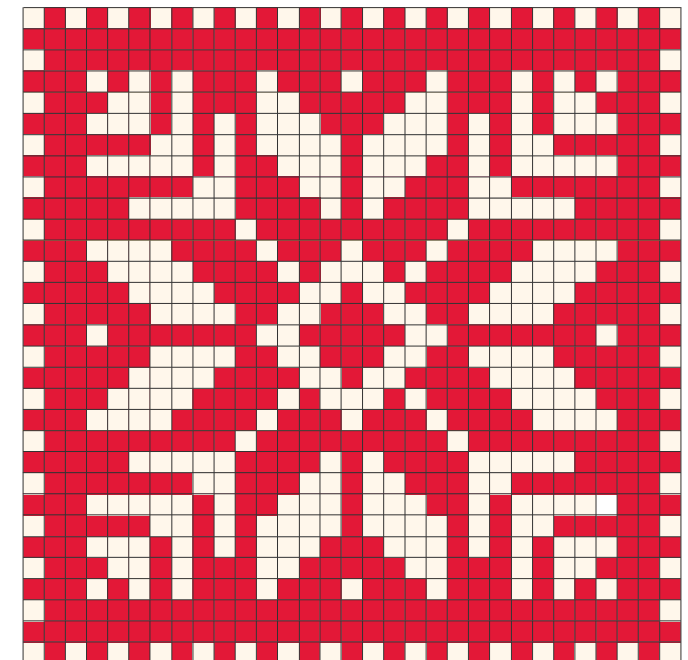
K 1 row.

Cast off.

MAKE UP

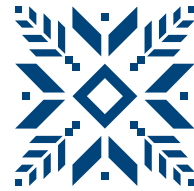
Join seam (remembering to join on reverse side for cuff as it will be folded to the right side). Fold cuff to right side. Fold loop in half and attach to back of stocking.

CHART



Key

■ (M)-Scarlet (140)
□ (C)-Snow (124)



MILLAMIA

SWEDEN

www.millamia.com