

# BLOUSE WITH LACE PATTERN

ALBA

Design: Lene Holme Samsøe • No. 2197BC



© BC Garn Aps. Foto: [www.adlerfotografi.dk](http://www.adlerfotografi.dk)



**BC Garn Aps tlf: +45 75 89 73 84**

# BLOUSE WITH LACE PATTERN

Design: Lene Holme Samsøe • Nr. 2197BC

<b>Sizes:</b>	<b>S</b>	<b>(M)</b>	<b>L</b>	<b>(XL)</b>
<b>Bust:</b>	86	(91)	102	(108) cm
<b>Length, approx.:</b>	65	(66)	68	(69) cm
<b>Yarn:</b>	350	(400)	450	(500) g, eb01

**ALBA** from **BC Garn**

**Needles:** Straight needles size 2.5 and 3mm  
Circular needles (60 cm) size 2.5 and 3 mm  
Circular needles (80 cm) size 3 mm

**Tension:** 23 sts = 10 cm using size 3 mm needle in lace pattern

**Abbreviations:** **dec(s)** = decrease(s/-ing); **inc(s)** = increase(s/-ing); **K** = knit; **K2tog** = K 2 sts tog;  
**LDD** = Left Leaning double decrease: S1 knitwise, k2tog, PSSO; **P** = purl; **PM** = place marker; **PSSO** = pass slipped st over; **S1** = slip 1 st; **SSK** = slip 2 sts (one at a time) knitwise, K together through back loop; **st(s)** = stitch(es); **tog** = together;  
**WS** = wrong side; **YO** = yarn over

**Back:** Cast on 98 (106) 114 (122) sts using size 2.5 mm needle (first row = WS).

Work 10 cm rib as follows: K edge stitch, P1, (K2, P2) to last 4 sts, K2, P1, K edge stitch. Inc evenly in last row of rib to 101 (107) 119 (125) sts.

Change to size 3 mm needles and work lace pattern according to chart – working edge sts as set. **NB:** Edge st is not shown in chart.

When work measures 47 (47) 48 (48) cm, cast off 6 (6) 9 (9) sts in both sides = 89 (95) 101 (107) sts. Place remaining sts on holder.

**Front:** As given for back.

**Sleeves (both alike):** Cast on 62 (66) 70 (74) sts using size 2.5 mm needles and work 10 cm in rib as for BACK. Dec evenly in last row to 59 (65) 71 (71) sts.

Change to size 3 mm needles and work lace pattern according to chart – working edge st as set. **AT THE SAME TIME:** when work measures 12 cm, inc 1 st in both sides and then every 3 cm 9 times in all = 77 (83) 89 (89) sts. New sts are to be worked in pattern.

When work measures 46-47 cm (ending in such a way that the side patterns are similar to the side patterns on both back and front), cast off 6 (6) 9 (9) sts in both sides = 65 (71) 71 (71) sts. Place remaining sts on holder.

**Join for Raglan:** Slip front, first sleeve, back and second sleeve onto size 3mm (80cm) circular needle = 308 (332) 344 (356) sts.

PM for start-of-round, work 1 round in lace pattern as set – excluding the two sts where each section joins another (join-sts). K these join-sts are in all following rounds.

**Dec-round:** \*SSK, work in lace pattern until 1 st before next join-sts, K2tog\*, repeat \* - \* = 8 sts dec in round.

**NB:** Work decs in pattern.

Where there are insufficient sts for a LDD with a YO on either side, work as follows: YO, SKK before the join-sts, after the join-sts k2tog, YO. This avoids altering lace pattern st count.

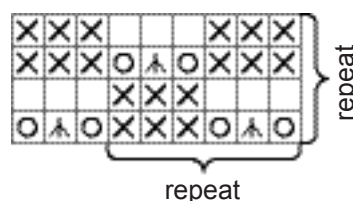
Work Dec-round every 2nd and 4th round, alternately, until you have worked dec-round 15 (17) 18 (19) times = 188 (196) 200 (204) sts.

Place front sts on holder, and work back and forth using circular needle, continue raglan decs at the back two join-sts of the sleeves closest to back. **AT THE SAME TIME** – in order to shape sleeve tops – cast off 4 sts at beginning of each row. Continue as set until all sleeve sts have been cast off.

**Neckline:** Using size 2.5 mm (60 cm) circular needle, pick up sts evenly along cast off-edge of first sleeve, work back-sts on holder, pick up sts evenly along cast off-edge of other sleeve, and work front-sts on holder = approx. 152 (160) 164 (168) sts in all.

Work 3.5 cm rib (K2, P2). Cast off in rib.

**Finishing:** Close sleeve- and side seams, close small seam at underarms.



- = K on RS, P on WS
- ⊗ = P on RS K on WS
- ⊙ = YO
- ⊠ = Left Leaning double decrease: S1 knitwise, k2tog, PSSO